

SOSEN LED Driver, Your Smart Choice

SS-200EP-56B LED

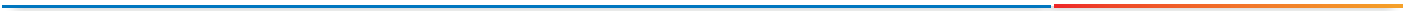
: SS-200EP-56B

: 200W LED

: V02

: 2021-09-02





--

SS-200EP-56B LED

1-10V		0V		12V	DIM+ 110uA
		10%Iomax		100%Ioset	DIM+ /DIM-
		1V		10V	
PWM	PWM	9.8V		10.2V	DIM+ 110uA
	PWM	0V		0.3V	DIM+ /DIM-
	PWM	1KHz		2KHz	
	PWM	10%		100%	
		10Kohm		100Kohm	DIM+ 110uA
		10%Iomax		100%Ioset	
	72	62,000 hours			80%
	MTBF	205,000 hours			220Vac, 25 (MIL-HDBK-217F)
		90			
		5			72
		850g			
		183mm*63.5mm*37mm			x x

25 LED



SS-200EP-56B LED

Tcase	-40	25	+90	
	-40	25	+90	
	10%RH		90%RH	
	5%RH		95%RH	
	-65m		4000m	

UL/cUL	UL8750	✓	
TUV	EN 61347-2-13:2014/A1:2017 EN 61347-1:2015 EN 62493:2015	✓	
RCM	AS/NZS61347.2.13		
CCC	GB 19510.14-2009	✓	
CE	EN 61347-2-13:2014 EN61347-1:2008+A1:2011+A2:2013		

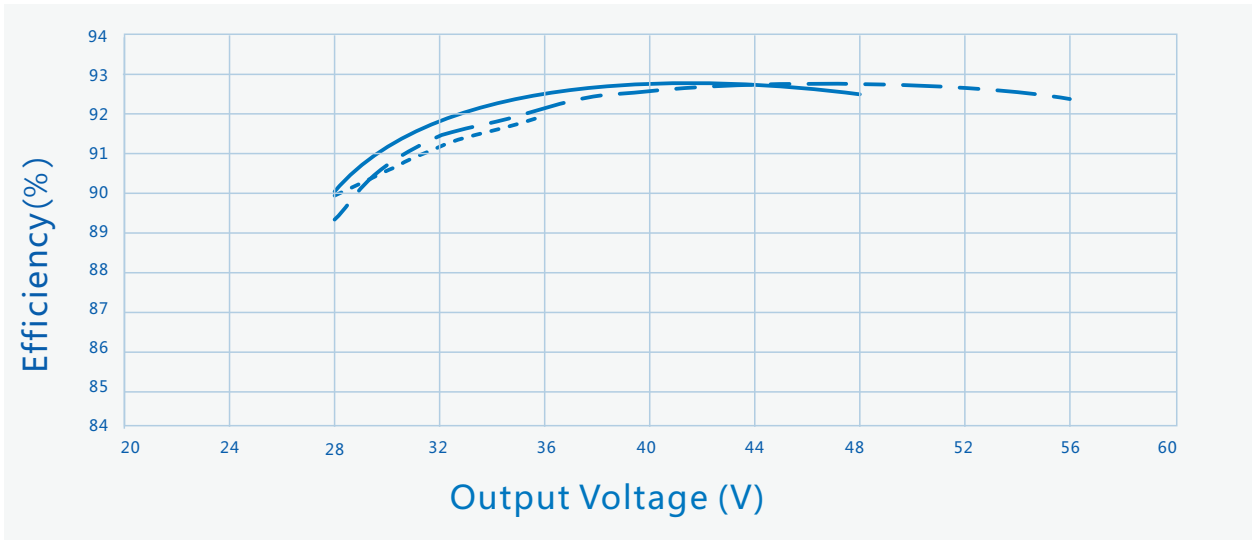
EMI/EMS	/	
	EN55015:2013+A1:2015	
	EN55015:2013+A1:2015	
	IEC/EN 61000-3-2	Class C
	IEC/EN61000-4-5	B (10kV 6kV)
	ANSI/C82.77-5-2017	B (6kV 6kV)
	IEC/EN 61000-4-12	B (6kV 6kV)





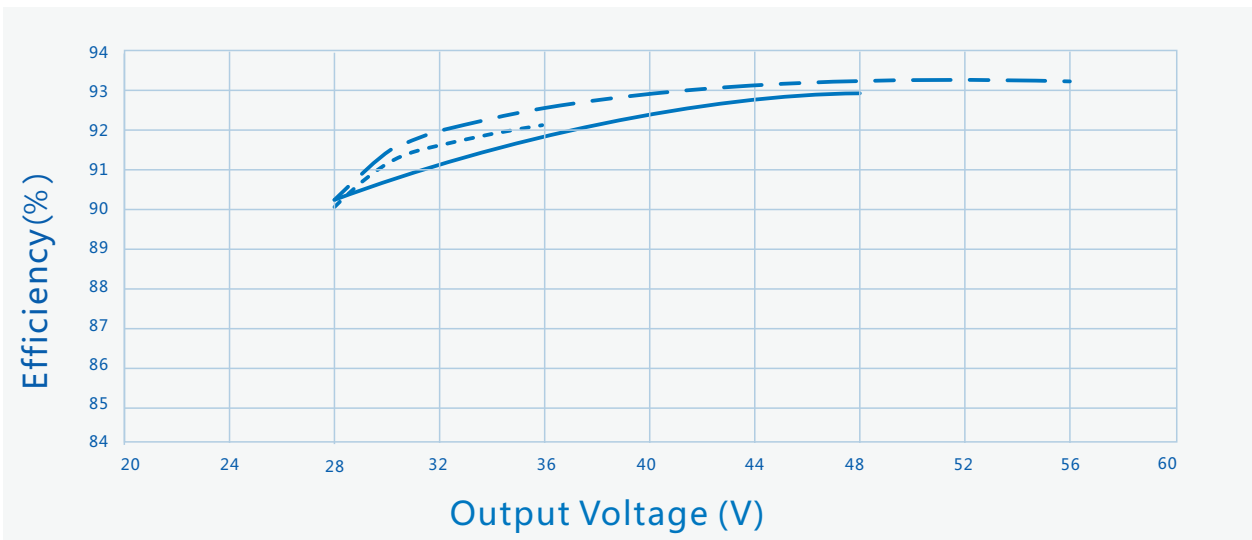
SS-200EP-56B LED

Vs. (Vin=220Vac)



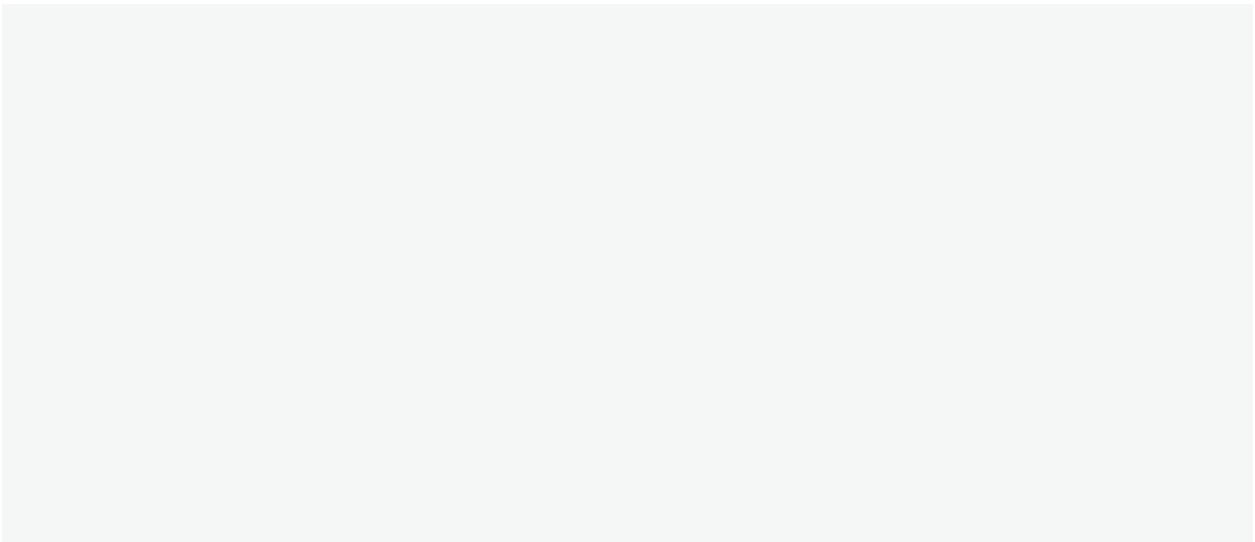
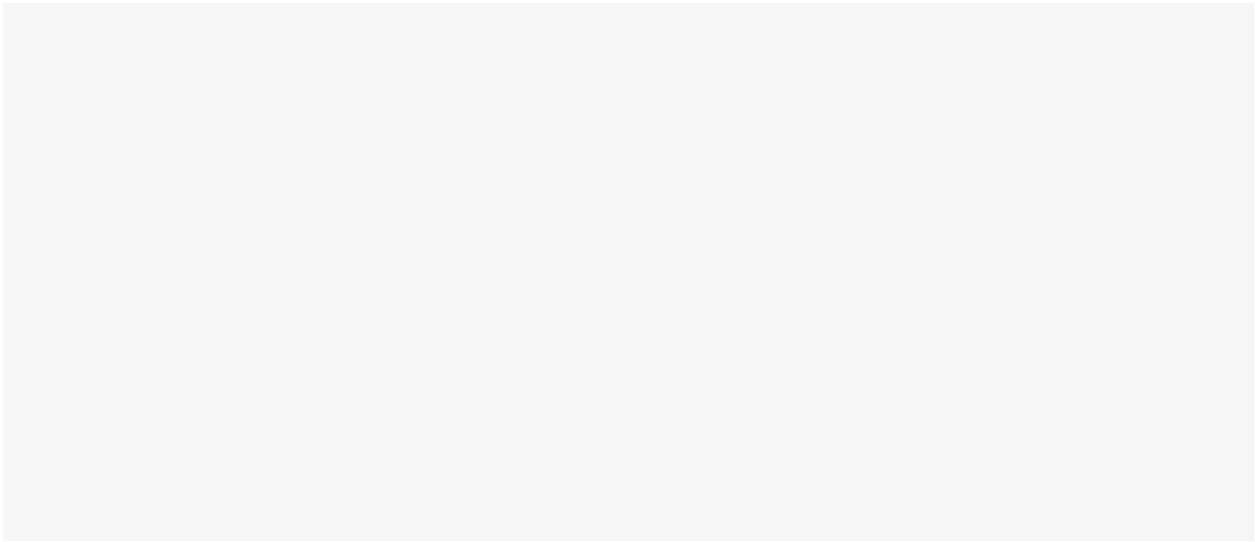
----- Io=5600mA ——— Io=4200mA - - - Io=3600mA

Vs. (Vin=277Vac)



----- Io=5600mA ——— Io=4200mA - - - Io=3600mA





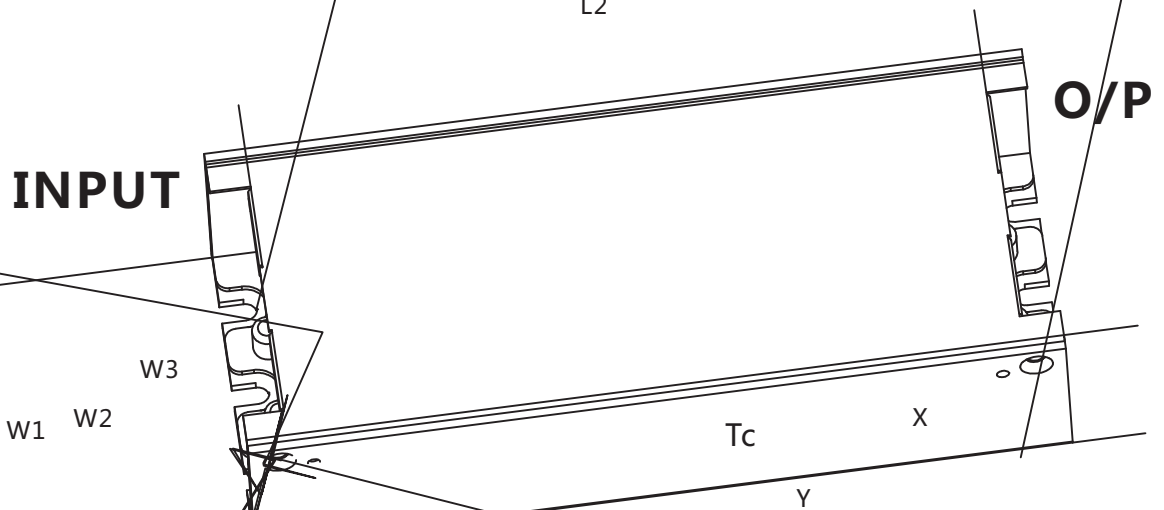
SS-200EP-56B LED

		mm(In.)
	W1	63.5(2.5)
	H	37(1.46)
	L1	183(7.20)
	L2	175(6.89)

	W2	32(1.26)
	W3	16(0.63)
Tc	X	67(2.64)
Tc	Y	19(0.75)

1
2 AC DC LED
10±2mm; DIM / / :

L1
L2



SS-200EP-56B LED

E

- mm) : × × = 495×385×162;
- 20
- 0.85kg 18.5kg
-
.

适应于车、船、飞机运输，运输中应遮蓬、防晒、文明装卸。

s t S

产品贮存应符合GB 3873 - 83的规定。
贮存期限超过1年的产品要重新检验，合格后方可使用。

RoHS (2011/65/EU)

2015/863/EU



SS-200EP-56B LED



V00		2020/06/18	
V01		2020/10/10	
V02		2021/09/02	

